

US SERIES-Front Terminal

US12-55FT (12V55AH)



General Features

- ◆ Sealed and maintenance free operation.
- ◆ Non-Spillable construction design.
- ◆ ABS containers and covers(UL94HB, UL94V-0) optional.
- ◆ Safety valve installation for explosion proof.
- ◆ High quality and high reliability.
- ◆ Exceptional deep discharge recovery performance.
- ◆ Low self discharge characteristic.
- ◆ Flexibility design for multiple install positions.



Battery Type	Valve-Regulated,Absorbed Glass Mat(AGM) Technology			
Nominal Voltage	12V			
Capacity(20°C)	20HR(2.93A,1.8V/cell)	10HR(5.54A,1.80V)	5HR(9.98A,1.75V)	1HR(36.2A,1.67V)
	58.6AH	55.4AH	49.9AH	36.2AH
Dimensions	Length	Width	Height	Total Height
	277mm(10.91inches)	106mm(4.17inches)	222mm(8.74inches)	222mm(8.74inches)
Approx Weight	Approx 18.0 kg (39.7lbs)			
Internal Resistance	Full Charged at 20°C: Approx 6.0m Ω			
Self Discharge	3% of capacity declined per month at 20°C			
Capacity affected by Temperature (10HR)	40°C	25°C	0°C	-15°C
	103%	100%	86%	65%
Charging Voltage (V)	Cycle use		Float use	
	14.4V~15.0V at 20 °C. T emp. Coefficient -30mV/ °C		13.5V~13.8V at 20 °C.Temp. Coefficient (-20mV/ °C)	
Current	Max. Discharge Current		Initial Charging Current	
	550A		Less than 15.0A	
Operating T emp.Range	Discharge		Charging	
	-15~50°C (5 ~122°F)		0~40°C (32 ~104°F)	
	Storage			
			-15 ~40°C (5 ~104°F)	

Constant Current Discharge (Amperes) at 20°C (68°F)

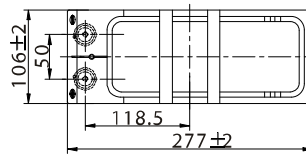
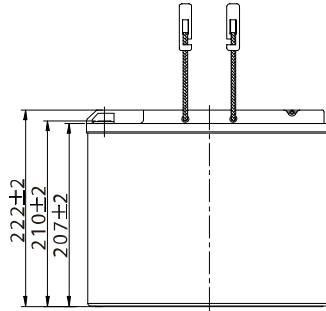
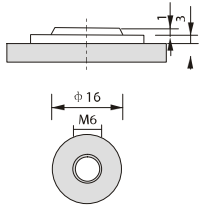
F.V/Time	10min	15min	20min	30min	45min	1h	2h	3h	4h	5h	6h	8h	10h	20h
1.85V/cell	90.9	75.8	65.0	51.0	39.5	32.1	19.4	13.9	11.2	9.27	8.15	6.35	5.29	2.81
1.80V/cell	103.0	84.4	72.0	55.8	42.5	34.3	20.4	14.8	11.8	9.75	8.56	6.67	5.54	2.93
1.75V/cell	113.1	91.4	76.8	58.6	44.2	35.5	20.8	15.1	12.1	9.98	8.70	6.75	5.60	2.98
1.70V/cell	120.9	96.2	79.9	60.3	45.2	36.0	21.1	15.2	12.2	10.0	8.80	6.84	5.66	3.00
1.67V/cell	125.1	98.6	81.5	61.1	45.3	36.2	21.2	15.3	12.2	10.1	8.91	6.94	5.71	3.01
1.60V/cell	131.6	102.4	85.2	62.6	46.5	37.1	21.5	15.6	12.5	10.4	9.07	7.10	5.82	3.03

Constant Power Discharge (Watts) at 20°C (68°F)

F.V/Time	10min	15min	20min	30min	45min	1h	2h	3h	4h	5h	6h	8h	10h	20h
1.85V/cell	169.7	142.9	123.8	98.2	76.8	62.6	38.0	27.5	22.1	18.4	16.2	12.7	10.6	5.61
1.80V/cell	190.1	157.1	135.1	105.8	82.0	66.5	39.8	29.1	23.1	19.2	16.9	13.3	11.1	5.86
1.75V/cell	205.3	168.0	142.8	110.3	84.3	68.6	40.4	29.4	23.7	19.6	17.1	13.4	11.2	5.94
1.70V/cell	214.7	174.5	147.4	112.9	85.9	69.3	40.9	29.7	23.8	19.7	17.3	13.6	11.3	5.98
1.67V/cell	221.3	178.1	149.9	114.1	86.0	69.4	41.0	29.7	23.9	19.8	17.5	13.7	11.4	6.00
1.60V/cell	226.2	181.2	154.3	115.5	87.3	70.5	41.3	30.2	24.3	20.3	17.7	14.0	11.5	6.03

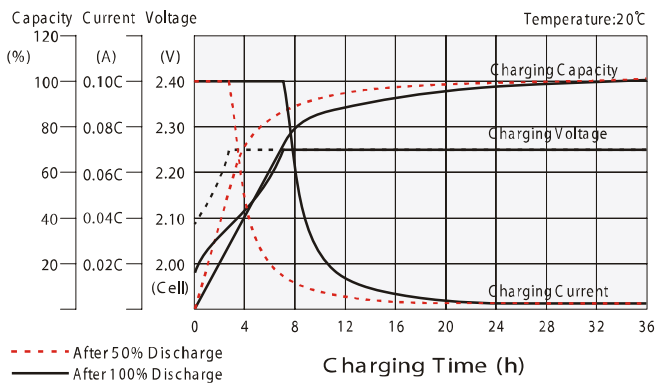
Dimensions

T6 Terminal
Unit: mm

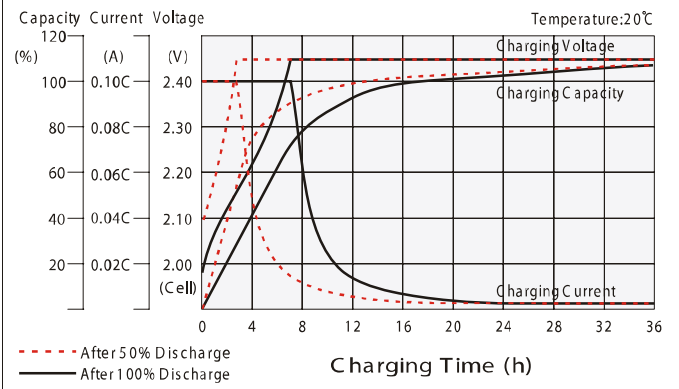


Torque: 3.9~5.4N*M

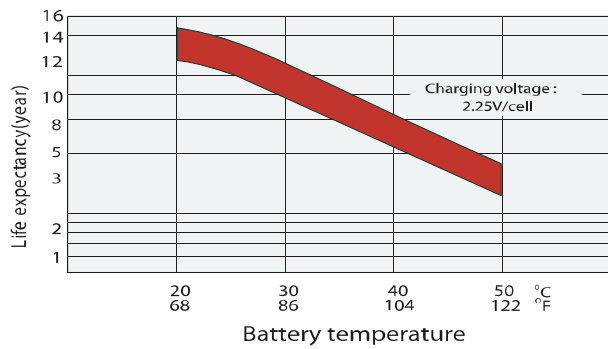
Float charging characteristics



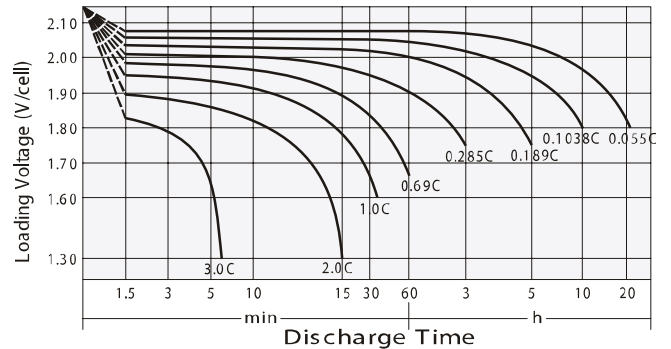
Cycle use charging characteristics



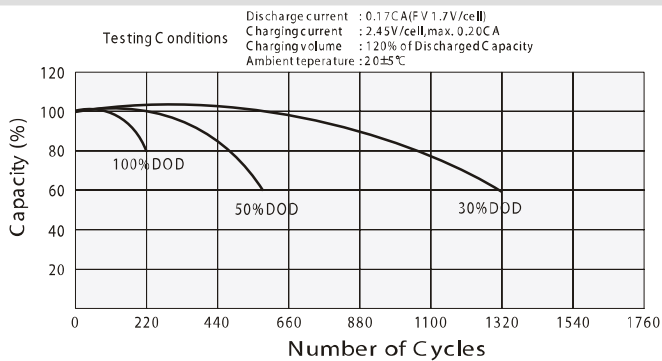
Effect of Temperature on Long Term Float Life



Discharge characteristics



Cycle Life in Relation to Depth of Discharge



Self Discharge Characteristics

