

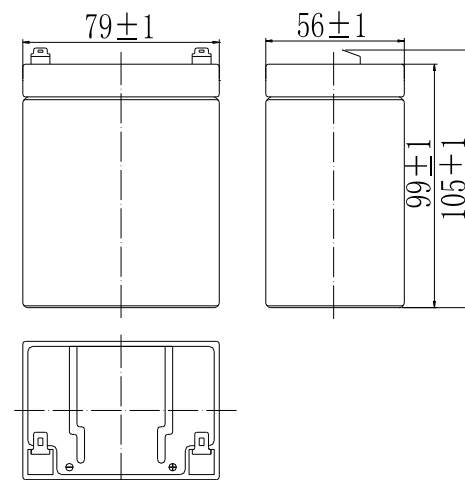
Specifications

Nominal Voltage		12 V
Capacity (25°C)	20HR(10.5V)	2.9Ah
	120HR(11.1V)	2.7Ah
	1HR(9.60V)	1.89Ah
Dimension	Length	79 ± 1mm (3.11inch)
	Width	56 ± 1mm (2.20inch)
	Height	99 ± 1mm (3.90inch)
	Total Height	105 ± 1mm (4.13inch)
Approx. Weight		1.05kg (2.32lbs) ± 5%
Terminal type & material		T1,Copper
Internal resistance (Fully charged, 25°C)		Approx. 42mΩ
Capacity affected by temperature (20HR)	40°C	102%
	25°C	100%
	0°C	85%
	-15°C	65%
Self-discharge (25°C)	3 month	Remaining Capacity: 91%
	6 month	Remaining Capacity: 82%
	12 month	Remaining Capacity: 65%
Nominal operating temperature		25°C ± 3°C (77°F ± 5°F)
Operating temperature range	Discharge	-15°C ~ 50°C (5°F ~ 122°F)
	Charge	-10°C ~ 50°C (14°F ~ 122°F)
	Storage	-20°C ~ 50°C (-4°F ~ 122°F)
Float charging voltage(25°C)		13.60 to 13.80V Temperature compensation: -18mV/°C
Cyclic charging voltage(25°C)		14.50 to 14.90V Temperature compensation: -30mV/°C
Maximum charging current		0.87A
Maximum discharge current		43.5A(5 sec.)
Designed floating life(20°C)		10years
Designed cycle life(25°C)		320 cycles@80% DOD

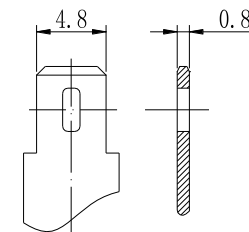
- ◆ Absorbent glass mat technology;
- ◆ ABS container, Recognized by UL & CE;
- ◆ Designed both for deep cycle use&floating charge use;
- ◆ **10 Years long life designed floating life.**



Dimensions



Terminal



Terminal T1

Constant Current Discharge Characteristics (A, 25°C)

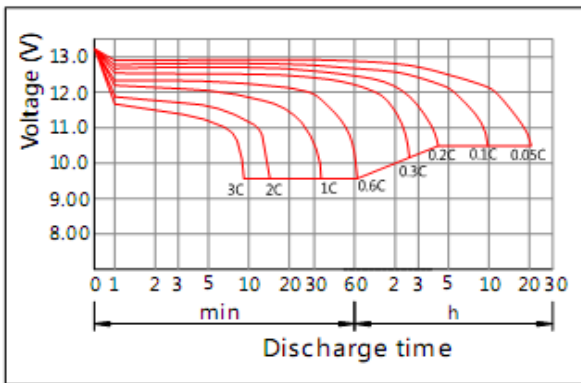
F.V/TIME	5min	10min	15min	30min	60min	2h	3h	4h	5h	10h	20h
9.60V	11.3	7.07	5.54	3.10	1.91	1.04	0.75	0.59	0.504	0.279	0.148
9.90V	10.9	6.89	5.44	3.03	1.87	1.04	0.75	0.59	0.504	0.272	0.148
10.2V	10.4	6.60	5.22	2.96	1.83	1.03	0.74	0.58	0.500	0.272	0.147
10.5V	9.97	6.31	5.05	2.88	1.80	1.00	0.74	0.58	0.500	0.268	0.145
10.8V	9.46	5.98	4.81	2.77	1.74	0.98	0.70	0.57	0.482	0.268	0.144

Constant Power Discharge Characteristics (Watt, 25°C)

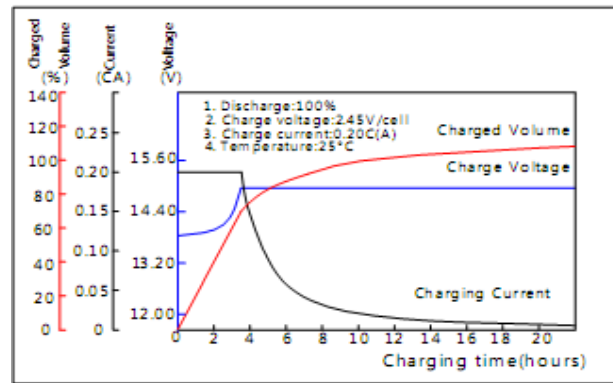
F.V/TIME	5min	10min	15min	30min	60min	2h	3h	4h	5h	10h	20h
9.60V	125	79.4	63.1	35.6	22.1	12.2	8.88	7.07	6.02	3.31	1.77
9.90V	122	77.6	61.6	34.8	21.6	12.0	8.81	7.03	6.02	3.29	1.77
10.2V	117	74.3	59.1	33.8	21.2	11.9	8.70	7.03	5.98	3.28	1.76
10.5V	112	71.4	57.7	33.0	20.9	11.8	8.63	6.96	5.91	3.27	1.74
10.8V	106	67.4	54.8	31.8	20.1	11.5	8.48	6.74	5.77	3.19	1.73

Note: The above characteristics data can be obtained within three charge/discharge cycles.

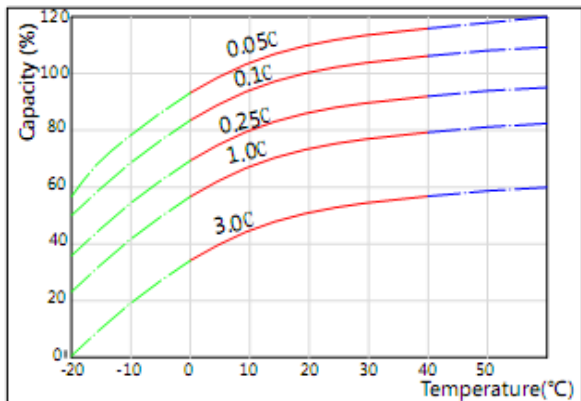
Discharge Characteristics(25°C)



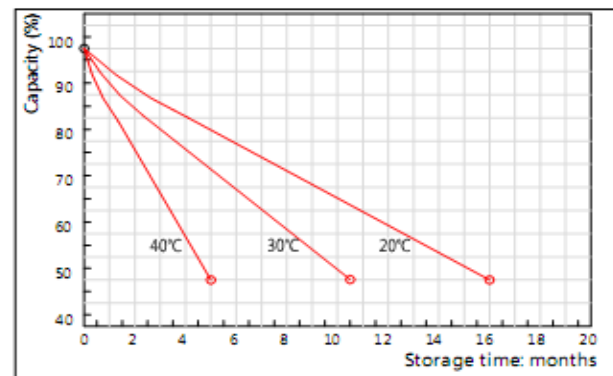
Charging Characteristics(25°C)



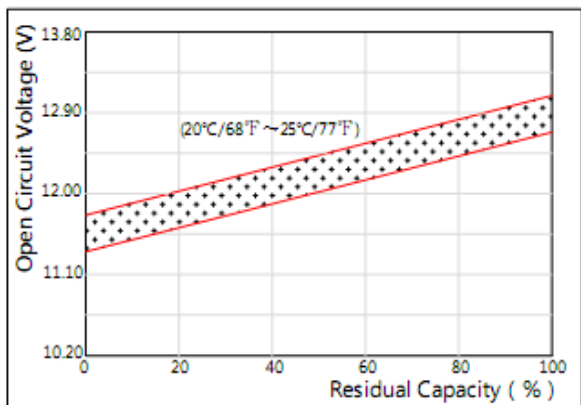
Effect of Temperature on Capacity



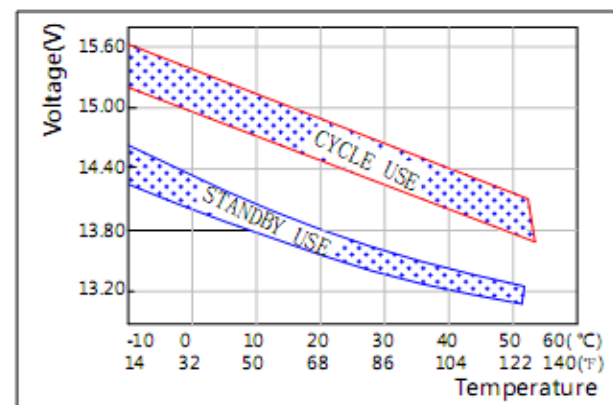
Self-discharge Characteristics



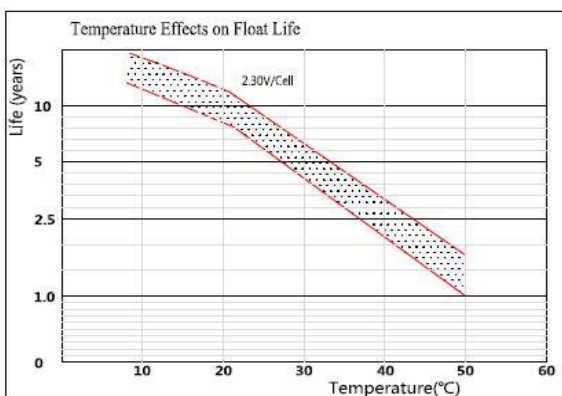
The Relationship for Open Circuit Voltage and Residual Capacity (25°C)



The Relationship for Charging Voltage and Temperature



Typical Use life and Operating Temperature



Cycle Life on D.O.D(25°C)

